



Spydercrane.com

Performance Specifications

**Telescopic Hydraulic Truck
Mounted Crane**

Spyder Model

UR505-A2

Specifications subject to change without notice

FURUKAWA UNIC PRODUCTS FOR NORTH AMERICA

Performance Specifications

Model URA505

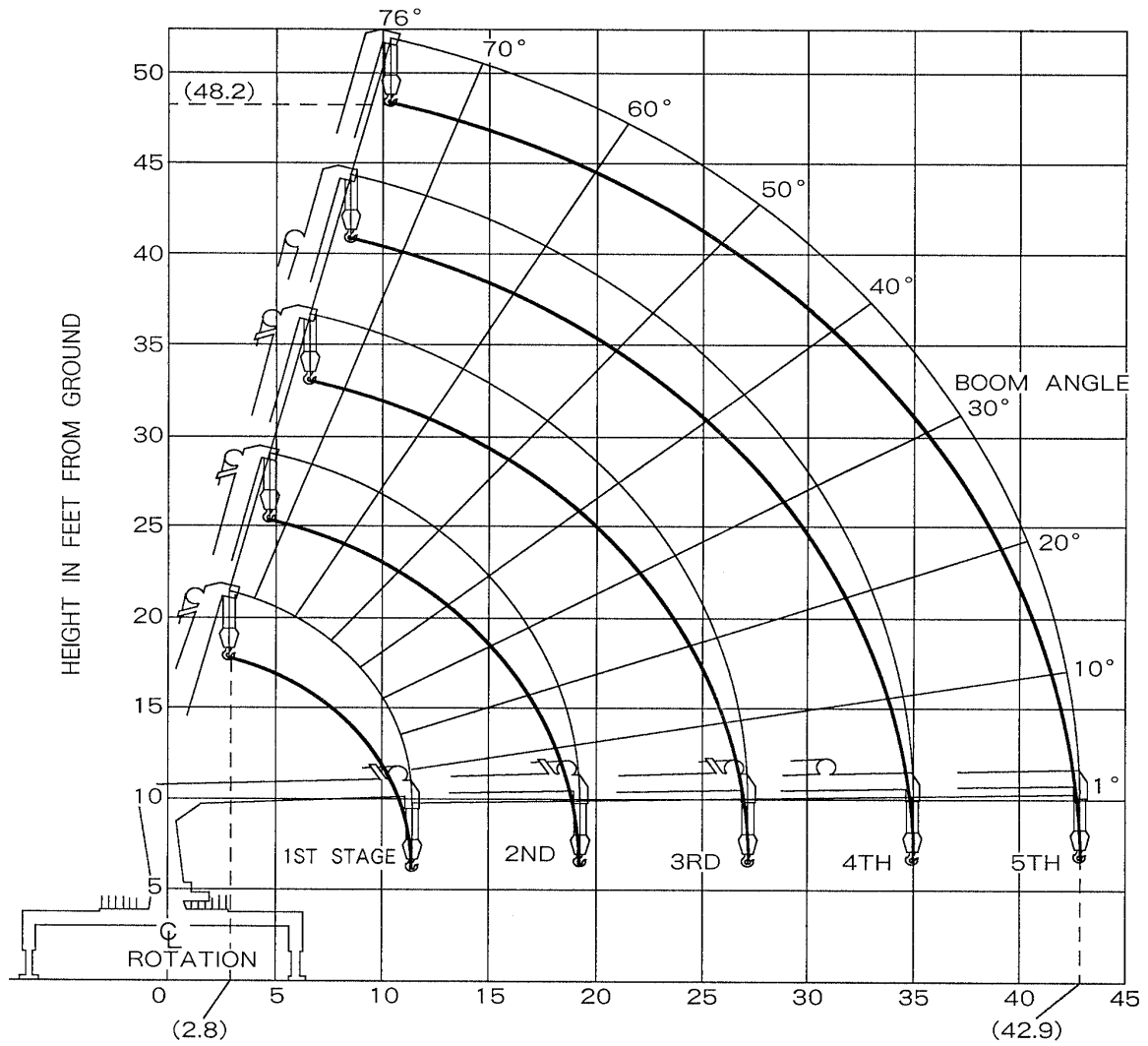
Page -1-

<i>Crane Capacity</i>	
Maximum Lift Capacity	10000 @ 7.4 feet
Work Radius	Minimum 2.8 feet to 42.9 feet
Boom Length	43.7 feet

Tip Height	53 feet
<i>Boom Design</i>	Five (5) section box beam telescoping, keel top and bottom with angle indicator.
All Booms Retracted	12.3 feet
Second Stage Extended	20.1 feet
Third Stage Extended Length	28 feet
Fourth Stage	35.9 feet
Fifth Stage	43.7 feet
Boom Extending Speed	31.4 feet / 27 seconds.
Boom Lifting Cylinder Design	Double Acting type with counterbalance valve.
Boom Travel Position	Forward over the cab or rear over the body.
Boom Raising Speed	1° to 76° / 12.5 seconds.
<i>Winch Design</i>	Hydraulic motor driven, spur gear reduction, with automatic mechanical brake.
Single Line Pull	2000 lbs.
Hoisting Speed Single Line	210 feet / minute @ 4th layer.
Hook Speed	42 feet / minute @ 4th layer.
Hook Block	10000 lbs. capacity, 2 sheaves with latch.
Hydraulic Motor	Axial plunger type.
Wire Rope Construction	6 x WS (26) Grade C.
Diameter x Length	5/16 inch x 311 feet.
Breaking Strength	9700 lbs.
<i>Swing Design</i>	Hydraulic motor driven, worm and spur gears reduction, worm self-locking brake.
Swing Range	360° continuous rotation on ball bearing.
Hydraulic Motor	Axial plunger type.
Swing Speed	2.5 rpm.

<i>Outrigger Design</i>	Out & Down Style, manual pull out on bearings. Vertical hydraulic jacks down. Cylinders have pilot-operated check valves. Audible alarm signals when jacks are in motion.
Retracted Span	7.2 feet
Extended Span	12.4 feet
<i>Hydraulic System</i>	Multiple control valves, spring centered spool type, with pressure relief valve.
Pressure Relief	2850 psi
Oil Reservoir Capacity	13 gallons.
Oil Strainer	100 micron wire mesh.
Return Filter	10 micron replaceable type.
Recommended Hydraulic Pump	2850 psi @ 14 gallons / minute.
Recommended Hydraulic Oil	ISO VG 46 for temps above 32 F, ISO VG 22 below 32F
<i>Operators Stations</i>	Dual stations curb and street side with crane and outrigger controls on each side. Horn button on panel.
<i>Standard Safety Equipment</i>	Anti-Two-Block , Outrigger motion Alarms, Horn.
<i>Electrical System</i>	12 Volt
<i>Manuals</i>	Complete Set. Parts, Service and Operators.
<i>Warranty</i>	12 months.
<i>Available Items</i>	Wireless Radio Remote Control. Cable Remote Control. LMI Electronic Overload System with Digital Readout. One Man Steel Basket
<i>Minimum Chassis</i>	26,000 GVWR
<i>Minimum Chassis Frame</i>	1,040,000 RBM. Section modulus 15.9
<i>Front Axle</i>	8500 lbs.
<i>Mounting Bolts</i>	Grade 8 threaded ends only. 1" NF x 12, 120,000 psi.
<i>Automatic Transmission</i>	May require neutral lock-up to limit RPM of pump.

RANGE DIAGRAM



BOOM RADIUS IN FEET FROM CENTER OF ROTATION

BOOM DEFLECTIONS NOT SHOWN

Boom Radius Feet	All Booms Retracted	Second Stage Extended	Third Stage Extended	Fourth Stage Extended	Fifth Stage Extended
7	10000	10000			
7.4	10000	10000			
8	9200	9200			
9	8200	8200	6700		
11.5	6300	6300	6300	4500	
13		5300	5300	4500	
14		4900	4900	4100	2300
16		4200	4200	3500	2300
18		3700	3700	3100	2000
19.5		3400	3400	2900	1800
23			2800	2400	1500
27			2300	2000	1300
29				1900	1200
32				1700	1100
35				1500	1000
39					900
42.9					700

Note:

1. Rated loads on the above chart are maximum allowable load with the outriggers fully extended on firm level ground and based on the actual working radius including the deflection of the boom.
2. Weights of hook (70lbs), Slings and any accessories to the boom or load line must be deducted from the rated loads.

Available Options:

- 1. Radio Remote Control**
- 2. Electronic Capacity Alert (Shut Down)**
- 3. One Man Steel Basket**