



**Spydercrane.com**

# Performance Specifications

---

---

**Telescopic Hydraulic Truck  
Mounted Crane**

**Spyder Model**

**UR504-A2**

Specifications subject to change without notice

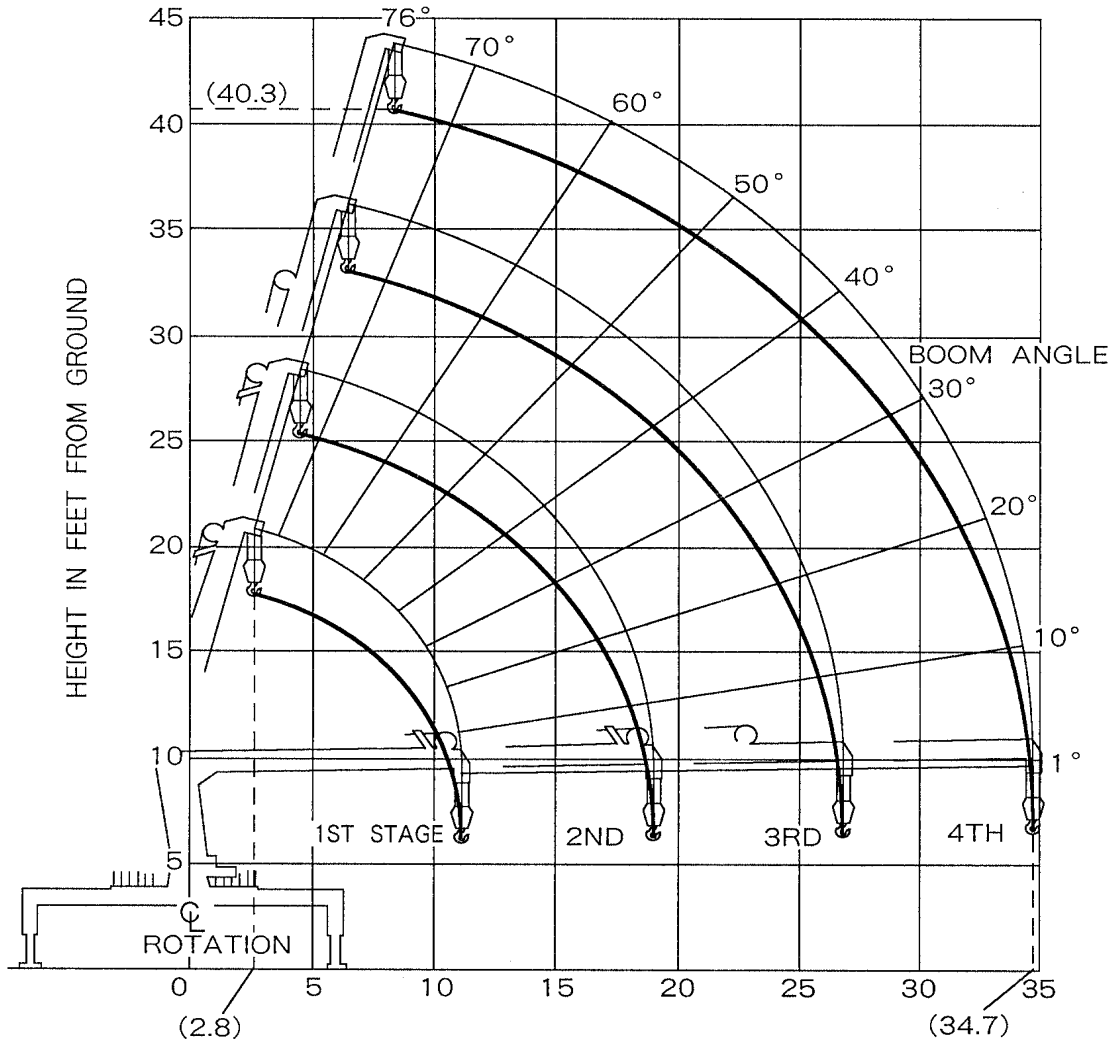
---

**FURUKAWA UNIC PRODUCTS FOR NORTH AMERICA**

<b><i>Crane Capacity</i></b>	
Maximum Lift Capacity	10000 @ 7.7 feet
Work Radius	Minimum 2.7 feet to 34.7 feet
Boom Length	35.5 feet
Tip Height	44 feet
<b><i>Boom Design</i></b>	Four (4) section box beam telescoping, keel top and bottom with angle indicator.
All Booms Retracted	12 feet
Second Stage Extended	19.9 feet
Third Stage Extended Length	27.7 feet
Fourth Stage	35.5 feet
Boom Extending Speed	23.5 feet / 22.5 seconds.
Boom Lifting Cylinder Design	Double Acting type with counterbalance valve.
Boom Travel Position	Forward over the cab or rear over the body.
Boom Raising Speed	1° to 76° / 12.5 seconds.
<b><i>Winch Design</i></b>	Hydraulic motor driven, spur gear reduction, with automatic mechanical brake.
Single Line Pull	2000 lbs.
Hoisting Speed Single Line	210 feet / minute @ 4th layer.
Hook Speed	42 feet / minute @ 4th layer.
Hook Block	10000 lbs. capacity, 2 sheaves with latch.
Hydraulic Motor	Axial plunger type.
Wire Rope Construction	6 x WS (26) Grade C.
Diameter x Length	5/16 inch x 267 feet.
Breaking Strength	9700 lbs.
<b><i>Swing Design</i></b>	Hydraulic motor driven, worm and spur gears reduction, worm self-locking brake.
Swing Range	360° continuous rotation on ball bearing.
Hydraulic Motor	Axial plunger type.
Swing Speed	2.5 rpm.

<b><i>Outrigger Design</i></b>	Out & Down Style, manual pull out on bearings. Vertical hydraulic jacks down. Cylinders have pilot-operated check valves. Audible alarm signals when jacks are in motion.
Retracted Span	7.2 feet
Extended Span	12.4 feet
<b><i>Hydraulic System</i></b>	Multiple control valves, spring centered spool type, with pressure relief valve.
Pressure Relief	2850 psi
Oil Reservoir Capacity	13 gallons.
Oil Strainer	100 micron wire mesh.
Return Filter	10 micron replaceable type.
Recommended Hydraulic Pump	2850 psi @ 14 gallons / minute.
Recommended Hydraulic Oil	ISO VG 46 for temps above 32 F, ISO VG 22 below 32F
<b><i>Operators Stations</i></b>	Dual stations curb and street side with crane and outrigger controls on each side. Horn button on panel.
<b><i>Standard Safety Equipment</i></b>	Anti-Two-Block , Outrigger motion Alarms, Horn.
<b><i>Electrical System</i></b>	12 Volt
<b><i>Manuals</i></b>	Complete Set. Parts, Service and Operators.
<b><i>Warranty</i></b>	12 months.
<b><i>Available Items</i></b>	Wireless Radio Remote Control. Cable Remote Control. LMI Electronic Overload System with Digital Readout. One Man Steel Basket
<b><i>Minimum Chassis</i></b>	26,000 GVWR
<b><i>Minimum Chassis Frame</i></b>	1,040,000 RBM. Section modulus 15.9
<b><i>Front Axle</i></b>	8500 lbs.
<b><i>Mounting Bolts</i></b>	Grade 8 threaded ends only. 1" NF x 12, 120,000 psi.
<b><i>Automatic Transmission</i></b>	May require neutral lock-up to limit RPM of pump.

RANGE DIAGRAM



BOOM RADIUS IN FEET FROM CENTER OF ROTATION

BOOM DEFLECTIONS NOT SHOWN

<b>Boom Radius Feet</b>	<b>All Booms Retracted</b>	<b>Second Stage Extended</b>	<b>Third Stage Extended</b>	<b>Fourth Stage Extended</b>
7	10000	10000		
7.7	10000	10000		
9	8500	8500	6700	
11	6900	6900	6700	4500
13		5700	5700	4500
14		5100	5100	4100
16		4400	4400	3500
18		3800	3800	3100
19		3600	3600	2900
21			3200	2600
23			2900	2400
25			2600	2200
27			2400	2000
29				1900
32				1700
34.7				1500

## Note:

1. Rated loads on the above chart are maximum allowable load with the outriggers fully extended on firm level ground and based on the actual working radius including the deflection of the boom.
2. Weights of hook (70lbs), Slings and any accessories to the boom or load line must be deducted from the rated loads.

**Available Options:**

1. **Radio Remote Control**
2. **Electronic Capacity Alert (Shut Down)**
3. **One Man Steel Basket**